

PRODUCT CATALOGUE



Shenzhen Anke High-tech Co., Ltd.

Address: Block B, LingYa Industrial Zone, Tangtou No.1 Road,
Bao'an District, Shenzhen, 518108, P.R. China





Tel: +86-755-21622518 26688889

Fax: +86-755-26695307 26685908

Email: anke@anke.com

Website: www.anke.com

Follow us on:

-  [@ANKE](https://twitter.com/ANKE)
-  [@ANKE](https://www.facebook.com/ANKE)
-  [@ANKE](https://www.instagram.com/ANKE)
-  Shenzhen Anke High-tech Co., Ltd

INSIGHT INTO LIFE





Company Milestones

- 1989** First MRI in China
- 1991** First High-tech Enterprise in Shenzhen, Guangdong
- 1991** First High-tech Enterprise in Chinese Medical Device Industry
- 1992** China's First Superconducting MRI 0.6T
- 1992** China's First High-precision Stereo-tactic
- 1994** Top One Hundred National High-tech Enterprise
- 1995** First PACS in China
- 1998** First Open MRI with Permanent Magnet in China
- 2000** First Neurosurgical Navigation System in China
- 2002** China's First Mammography System ASR-3000
- 2004** Guangdong Top One Hundred High-tech Enterprise
- 2009** First Mobile CT in China
- 2010** China's First Superconductive MRI 1.5T
- 2012** Launched FPD Digital Mammography
- 2013** The World's First Non-contact Slip-ring 16-slice Spiral CT
- 2014** Third Generation 1.5T Superconducting MRI
- 2015** China's First High-end Dental CT
- 2016** Launched Precision Platform CT Systems
- 2017** Launched Non-contact Slip-ring 128-slice Spiral CT
- 2018** China's First Vehicle-mounted CT
- 2019** Fit Platform Multi-slice CT Series Released
- 2020** ANATOM Precision AI-powered 128-slice Spiral CT Launched
- 2021** High-end ANATOM S800 256-slice and ANATOM S400 128-slice Spiral CT Launched

NEW GLOBAL STRATEGY MAKE GLOBAL BECOMES GLOCAL



Chinese Medical Trailblazer and Pioneer Established in 1986

11000+ users and hospitals globally

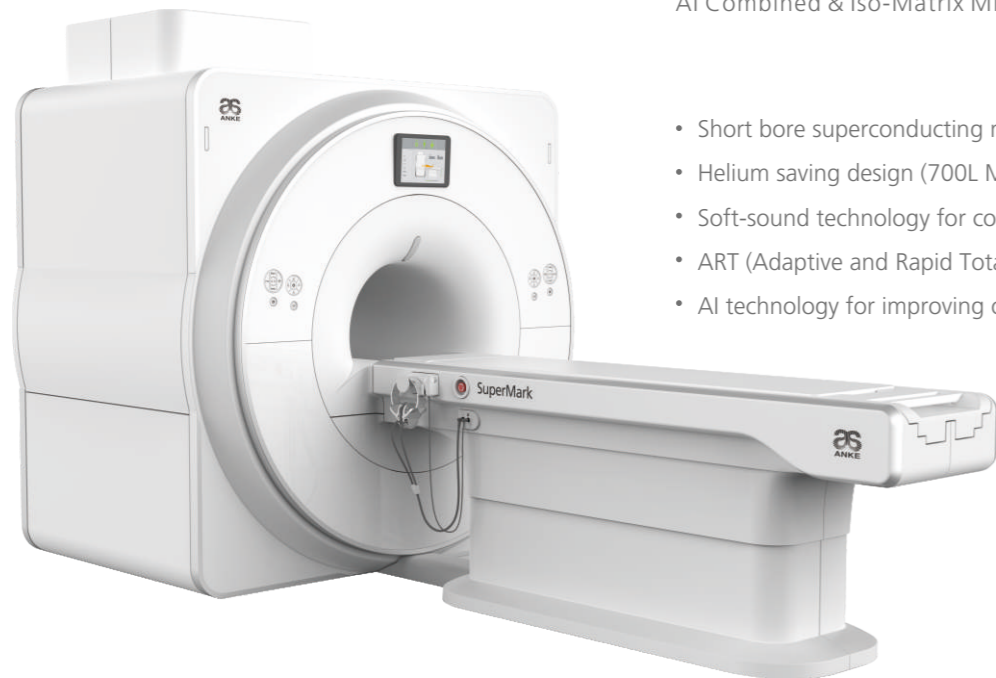
1980+ MRI & **2100+** CT & **3000+** X-Ray products installations

Export to **45+** countries & regions worldwide

Footprints reached: Venezuela, Argentina, Brazil, Peru, Colombia, Mexico, Turkey, UAE, Egypt, Yemen, Italy, Germany, Romania, Philippines, Indonesia, Vietnam, Myanmar, Bangladesh, India, Pakistan, Kenya, Nigeria, Ethiopia, South Sudan, Cote d'Ivoire, Gabon, Cameroon, Zambia, Ghana, Russia, Tajikistan, Kazakhstan, Uzbekistan, Ukraine.....

SuperMark 1.5T

AI Combined & Iso-Matrix MRI



- Short bore superconducting magnet with high homogeneity
- Helium saving design (700L Max.) with truly "0" boil-off
- Soft-sound technology for comfortable scanning
- ART (Adaptive and Rapid Total) imaging platform
- AI technology for improving operational efficiency

OPENMARK 5000

High-level Permanent MRI



- Truly mid-field permanent magnet, up to 0.51T
- Unique shimming technology, Max. FOV = 40cm
- Accu-Form gradient system with powerful output
- New generation imaging platform with AI technology



OPENMARK 4000

A Small Step to Success

- C-shaped magnet with large openness (up to 320°)
- New generation imaging platform with AI technology
- More comprehensive applications, higher scanning speed
- Compact design saving 30% space of site

OPENMARK III

Compact design, Giant leap

- Maintenance-free thermostatic magnet
- Compact design saving 30% space of site
- New generation imaging platform with AI technology
- High return on investment with ultra-low operating cost



ANATOM S400 ANATOM S800

- AI-based intelligent whole-body spectrum CT
- New generation OptiWave detector
- Precise patient positioning system
- Ultra-fast gantry rotation speed
- High-fidelity imaging system
- Comprehensive coronary CTA imaging technology



ANATOM 16 HD / ANATOM 64 Clarity / ANATOM 64 Precision / ANATOM Precision

- World leading precision technology platform
- Lower dose and higher image quality system
- Intelligent interface and workflow
- New generation OptiWave detector
- Admir^{3D} iterative reconstruction technology
- AccuSpin dual-energy imaging technology
- AccuTilt dual-mode gantry tilt technology





ANATOM 32 Fit / ANATOM 64 Fit / ANATOM A200

- High efficiency new generation OptiWave™ detector
- Admir^{3D} iterative reconstruction technology
- Adose^{3D} dose management platform fits your dose
- Comprehensive routine clinical applications
- DigiTilt gantry tilt technology fits your efficiency
- Versatility fits costs for running your successful business

DENTOM CT

World's Class Dental Cone Beam CT System

- Large size amorphous silicon flat panel detector
- Super large field high resolution 3D imaging
- MetalCARE metal artifact correction technology
- BoneCARE correction techniques for bony artifact
- NoiseCARE noise reduction correction technology
- Equipped with a powerful post processing software





ASR-4000 Series

Digital Mammography System

- High-end hardware component
- Multi-configuration available for your options
- L-Dose dose optimization technology
- I-Pose intelligent positioning technology
- F-Comp flexible compression technology
- E-View excellent working platform

ASR-6850P series

Classic Floor-mounted DR System

- Various configurations available for your needs
- Mobile multi-functional FPD fulfills different clinical scenarios
- Integrated four-way floating patient table
- Intelligent LCD touch screen for byside parameter settings
- Whole spine scan applicable as an option for special need
- Professional and abundant protocols for different cases



ANATOM Vet

32-slice CT System Taking Care of Your Pets

- Compact design to fit your cost and space
- Dedicated vet protocols support all clinical needs with high image quality
- Large space makes more comfortable exam and easier operation



OPENMARK Vet

C-shape Permanent MRI System Taking Care of Your Pets

- Integrated electric patient table to provide more convenient operation
- Dedicated vet protocols support all clinical needs with high image quality
- Large openness makes more comfortable exam and easier operation



Mobile CT Solutions



Bus version

Mobile CT Solutions



Shelter version

- Emergency rescue, fast and convenient
- Field medical, specialized for military usage
- Anti-epidemic case, efficient and practical
- Materials suitable for disinfection
- Separate personnel and patient channels to avoid cross infection
- Wireless control, unlimited security
- Nervous system, respiratory system
- Bone and joint, tumor screening etc.
- Plain and enhanced scans, comprehensive clinical applications



Truck version

High Pressure Injection Systems

ASA-200E

Single-syringe System

- New control platform, stable performance & friendly interface
- 100 sets of storable injection programs
- The double-operation working platform makes the scanning room and the operation room integrated
- "Air-exhausted confirmation" button to ensure safe injection



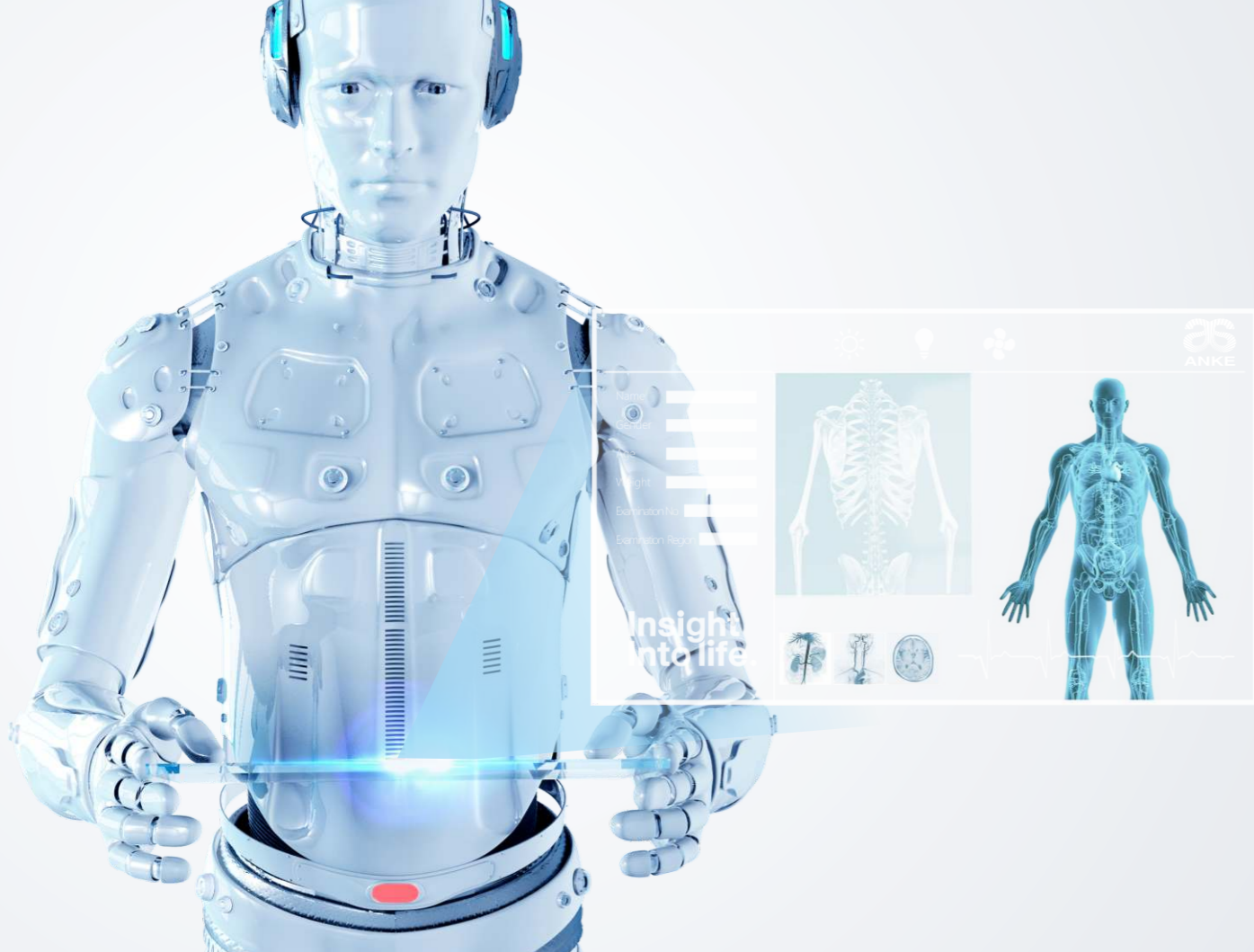
High Pressure Injection Systems

ASA-300

Dual-syringe System

- Large touch screen for easy and convenient usage
- A variety of input and output methods compatible to link with a variety of imaging equipment
- Automatic sound and light alarms indicate the pressure limit while stopping the injection
- The real-time indicator flashes to remind the injection process.





EXTREME IMAGE SMART MEDICAL

Artificial Intelligence based technology assists medical imaging diagnosis.

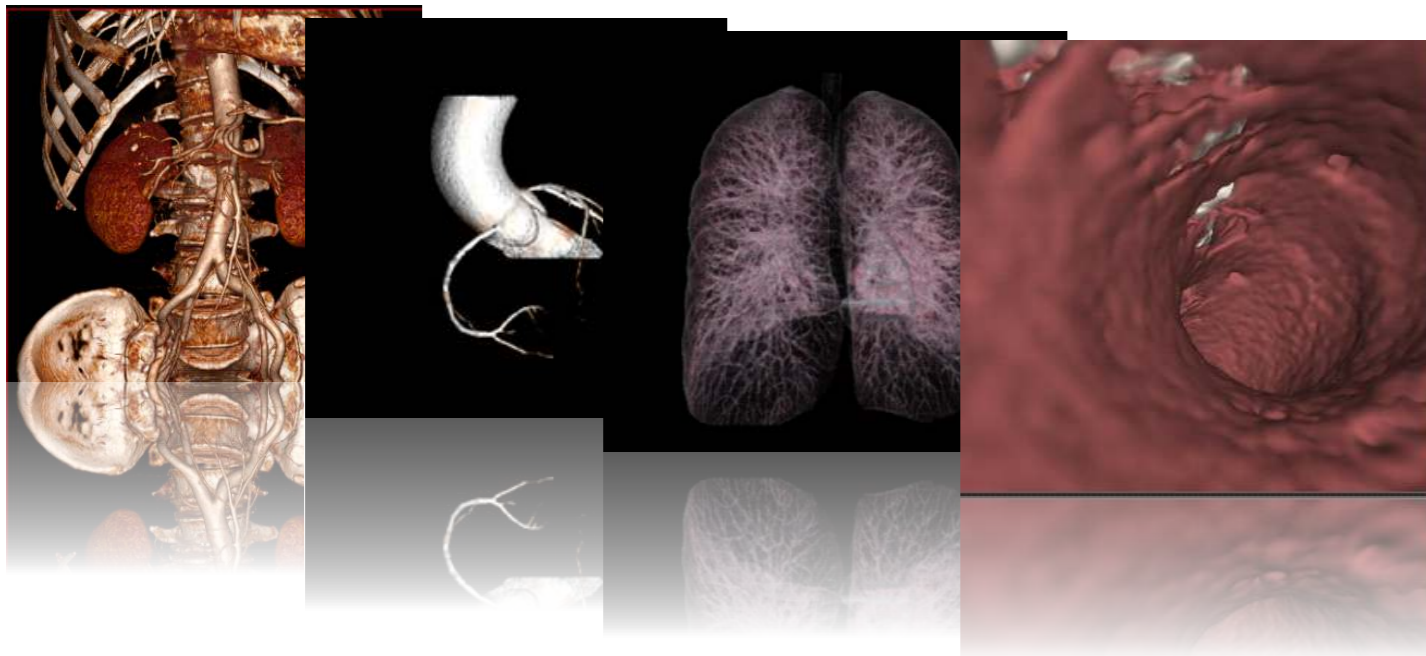
- Auto Segmentation
- Auto Location
- Auto Measurement of lesion

ANKE Workstation

AI based advanced workstation

Auto segmentation

Automatic segmentation of bone, lung, coronary artery and other blood vessel.



Auto location and measurement of disease

Pneumonia analysis

Automatic location and measurement pneumonia. Comparison of old and new data can monitor patient prognosis.

Nodule analysis

Automatic location and measurement lung nodule. Comparison of old and new data can follow up lesions progression.

Emphysema analysis

Automatic measurement lung emphysema to evaluation respiratory function.

Coronary analysis

Automatic segmentation and extraction centerline of the different branch of coronary artery, calculation of vessel stenosis, measurement atherosclerotic plaques and clots composition.

Vascular analysis

Automatic segmentation and extraction centerline of blood vessel. Calculation of vessel stenosis, measurement atherosclerotic plaques and clots composition.

Brain hemorrhage analysis

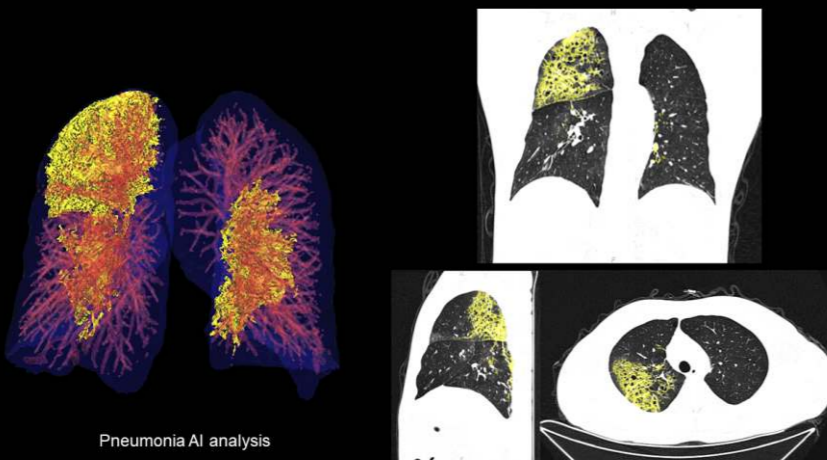
Automatic location and measurement brain hemorrhage.

Dental analysis

Automatic tooth panorama and each tooth slice, neural tube analysis, TMJ analysis.

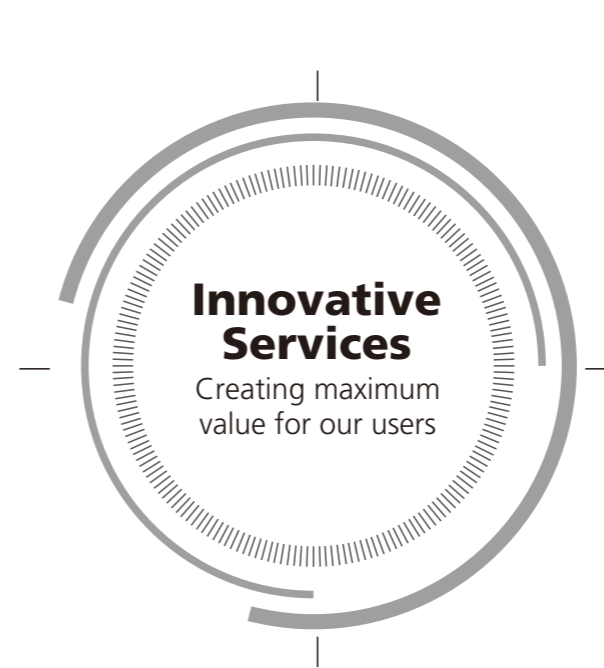
ANKE's AI Technology Solutions

A short-time AI imaging analysis technology 30 seconds to automatically determine the location of pneumonia, providing the accurate and effective results for doctors.



To fight against COVID-19,
ANKE is on the way.

From the moment you choose ANKE, our all-round cooperation begins. Once you are in ANKE's global customer service system, you will experience a complete service solution that is all you expect, all you want and all you need.



Service Platform

- 24-hour call centre service
- Spare parts guarantee in the spare parts centre
- Professional tools for efficient insurance



Service Quality

- One-to-one service by technical experts
- Preventive maintenance
- Timely detection of hidden problems



Service Network

- Over 100 engineers
- Over 30% technical experts
- R&D-led technical support centre



Service Efficiency

- Remote support
- Fast problem solving
- Efficient dispatch to reduce time