

# SEC A to 5AH

## Air treatment by filtration and drying by adsorption

- Dew point at  $-70^{\circ}\text{C}$  for delivery air
- High quality air
- Permissible maximum pressure : 16 bar
- Air dryer with expendable tubes
- Simple and easy installation and maintenance

### Filter types

- **CY** : Cyclonic filtration
- **PF** :  $1\ \mu\text{m}$  micronic filtration
- **SUB** :  $0,01\ \mu\text{m}$  submicronic filtration
- **CHA** : Active carbon filter for odours elimination
- **ER** : Electro-cooler to stimulate condensate by temperature lowering
- **PAR** :  $0,01\ \mu\text{m}$  particles filtration
- **MC** : Carbon monoxyde filtration
- **BAC** : Bacterial filter



SEC 5AH

## Air quality complying with ISO 8573-1 Standard

TYPE	QUALITY CLASS
■ SEC 1A	2, 1, 3
■ SEC 2A	1, 1, 2
■ SEC 3A	1, 1, 1
■ SEC 3 AH	1, 1, 1
■ SEC 5 AH	1, 1, 1

SEC 3A device gives BREATHABLE or ALIMENTARY air when SEC 3AH or SEC 5AH gives MEDICAL air fit to European Monograph.

## Process sequence



## Combination

TYPE	PREFILTRATION				DRYING	FILTRATION					
	ER	CY	PF	SUB	AD DRYER	CHA	SUB	MC	PAR	CHA	PAR or BAC
■ SEC A	▲	▲			■						
■ SEC 1 A	▲	▲	■		■						
■ SEC 2A	▲	▲	■		■	■					
■ SEC 3A	▲	▲	■	■	■	■	■				
■ SEC 3 AH	▲	▲	■	■	■			■	■	■	■
■ SEC 5 AH	▲	■	■	■	■			■		■	■

■ standard equipment      ▲ optional equipment

### Schedule for flow rate corrections according to the operation pressure

bar	7	8	10	12	14	16
coeff.P	0,84	0,89	1	1,1	1,18	1,26

### Schedule for flow rate corrections according to inlet temperature °C

Inlet temperature °C	+25	+30	+35	+40	+45	+50
T coefficient for dew point at $-45^{\circ}\text{C}$ in reduced air	1,25	1,15	1	0,85	0,62	0,5

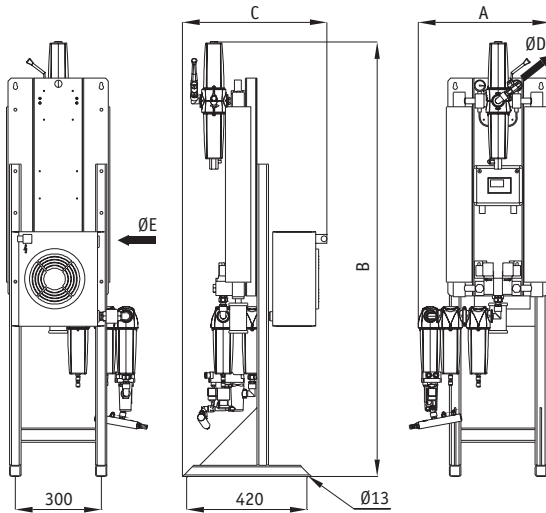
### Percentage of regeneration gas taken from the inlet air flow rate according to the pressure, the air temperature and the expected dew point

Percentage of taken air according to the inlet temperature and the operating pressure																			
Expected dew point at reduced pressure	Inlet temperature °C	+25			+30			+35 standard			+40			+45			+50		
		7	10	15	7	10	15	7	10	15	7	10	15	7	10	15			
<-25°C	Percentage	11	8	6	11	8	6	14	10	7	18	13	9	23	17	12	29	21	15
<-40°C	Percentage	12	9	7	12	9	7	15	11	8	19	14	10	24	18	13	30	22	16
<-60°C	Percentage	20	14	11	20	14	11	23	16	12	27	19	14	31	23	17	38	27	20

# Compressed air treatment

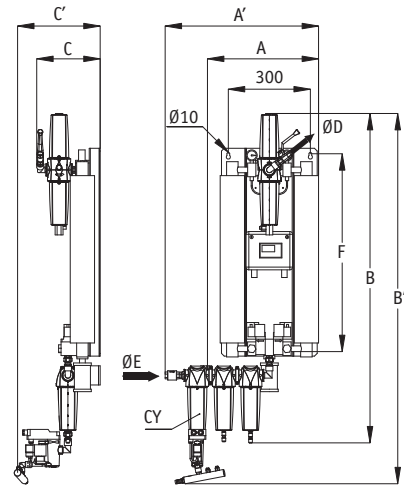
## Dimensions (mm)

AD425 to AD460 - Version with electro-cooler



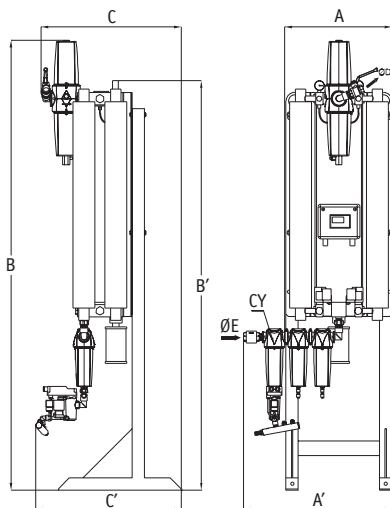
	A	B	C	ØD	ØE	WEIGHT
AD425	455	1325	495	3/8"	3/8"	35 kg
AD445	460	1520	505	3/8"	3/8"	48 kg
AD460	465	1725	510	3/4"	3/4"	60 kg

AD425 to AD480 - Version without electro-cooler



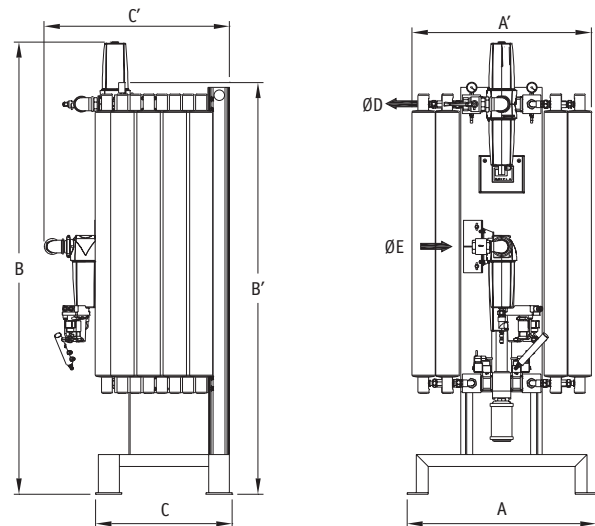
	A	A'	B	B'	C	C'	F	ØD - ØE	WEIGHT
AD425	390	495	935	1110	230	300	540	3/8"	25 kg
AD445	415	515	1180	1255	230	300	730	3/8"	38 kg
AD460	470	570	1390	1565	230	300	930	1/2"	50 kg
AD480	500	600	1620	1735	270	300	1130	3/4"	60 kg

AD4115 to AD4240 - Version without electro-cooler



	A	A'	B	B'	C	C'	ØE	ØD	WEIGHT
AD4115	505	600	1830	1675	560	560	3/4"	3/4"	115 kg
AD4180	575	800	1830	1675	560	560	3/4"	3/4"	150 kg
AD4240	595	725	1830	1675	600	600	1"	1"	190 kg
AD4300	720	680	1720	1565	520	520	1 1/4"	1 1/4"	300 kg
AD4400	720	680	1810	1565	520	520	1 1/4"	1 1/4"	300 kg
AD4550	720	680	1810	1565	520	715	1 1/4"	1 1/4"	450 kg

AD4300 à AD4550 - Version without electro-cooler



4 holes, Ø15, ground fixation.  
Center distance 380 x 460 for AD4115 to AD4240.  
Center distance 690 x 420 for AD4300 to AD4550.

Dimensions of AD4150 and AD4220 air treatment units : consult us

# (continued) SEC A to 5AH

## Air treatment devices and replacement part references

Maxi pressure : 16 bar. Flow rates given at 10 bar at 35° C, to be corrected further to schedules page 48

	AD 425 20 m <sup>3</sup> .h <sup>-1</sup> wall mounting	AD 445 35 m <sup>3</sup> .h <sup>-1</sup> wall mounting	AD 460 45 m <sup>3</sup> .h <sup>-1</sup> wall mounting	AD 480 60 m <sup>3</sup> .h <sup>-1</sup> wall mounting	AD 4115 90 m <sup>3</sup> .h <sup>-1</sup> on ground	AD 4180 140 m <sup>3</sup> .h <sup>-1</sup> on ground
SEC A	817442	817443	817444	817749	817445	817446
SEC 1A	PF36 - AD 425 PF36 920588	PF72 - AD 445 PF72 920589	PF72 - AD 460 PF72 920590	PF109 - AD 480 PF109 920591	PF109 - AD 4115 PF109 920592	PF217 - AD 4180 PF217 920593
SEC 2A	PF36 - SUB36 AD425 - SUB36 920598	PF72 - SUB72 AD445 - SUB72 920599	PF72 - SUB72 AD460 - SUB72 920600	PF109 - SUB109 AD480 - SUB109 920601	PF109 - SUB109 AD4115 - SUB109 920602	PF217 - SUB217 AD4180 - SUB217 920603
SEC 3A	PF36 - SUB36 AD425 CHA/SUB23 920626	PF72 - SUB72 AD445 CHA/SUB48 920627	PF72 - SUB72 AD460 CHA/SUB48 920628	PF109 - SUB109 AD480 CHA/SUB91 920629	PF109 - SUB109 AD4115 CHA/SUB91 920630	PF217 - SUB217 AD4180 CHA/SUB145 920631
SEC3AH - MCPAR with electro-cooler	CY10-PF36-SUB36 AD425 MC/PAR48 921622	CY20-PF72-SUB72 AD445 MC/PAR48 921623	CY20-PF72-SUB72 AD460 MC/PAR48 921624			
SEC 5AH	CY10-PF36-SUB36 AD425 920636	CY20-PF72-SUB72 AD445 920637	CY20-PF72-SUB72 AD460 920638	CY20-PF109-SUB109 AD480 920639	CY20-PF109-SUB109 AD4115 920640	CY30-PF217-SUB217 AD4180 920641
<b>Cartridge for replacement</b>						
PF 1 µm	PF 36 430031	PF 72 430032		PF 109 430033		PF 217 430034
SUB 0,01 µm	SUB 36 430040	SUB 72 430041		SUB 109 430042		SUB 217 430043
CHA carbon	CHA 23 430058	CHA 48 430059		CHA 91 430060		CHA 145 430061
MC		MC 48 430069				MC 145 430070
PAR particles		PAR 72 430050				PAR 217 430052
Dryer tube	T20 709638 x 2	T30 708987 x 2	T40 708988 x 2	T50 717578 x 2	T40 708988 x 4	T40 708988 x 6
Recovery and destruction	of the worn dryer tube 613961					
Steel frame mounting	for ground standing 617580					

## Accessory and option references

1	HYGROMIL'S 2000 complete with indicator	4/20 mA output and ON/OFF contact	715810
2	HYGROMIL'S 2000 probe alone	without indicator, 4/20 mA output only if compressors controlled by PROCOM or C2020	715745
3	COMBI automatic drain	under PF/SUB filters (230V mono)	620721
4	BEKO 12 electronic drain	with alarm switch under PF/SUB filters (230V mono)	615160

# Compressed air treatment

AD 4240 180 m <sup>3</sup> .h <sup>-1</sup> on ground	AD 4300 230 m <sup>3</sup> .h <sup>-1</sup> on ground	AD 4400 288 m <sup>3</sup> .h <sup>-1</sup> on ground	AD 4550 360 m <sup>3</sup> .h <sup>-1</sup> on ground
<b>817447</b>	<b>817490</b>	<b>818636</b>	<b>821680</b>
PF217 - AD 4240 PF217 <b>920594</b>	PF396 - AD 4300 PF396 <b>920595</b>	PF396 - AD 4400 PF396 <b>920596</b>	--
PF217 - SUB217 AD4240 - SUB217 <b>920604</b>	PF396 - SUB396 AD4300 - SUB396 <b>920605</b>	PF396 - SUB396 AD4400 - SUB396 <b>920606</b>	--
PF217 - SUB217 AD4240 CHA/SUB145 <b>920632</b>	PF396 - SUB396 AD4300 CHA/SUB217 <b>920633</b>	PF396 - SUB396 AD4400 CHA/SUB307 <b>920634</b>	PF396 - SUB396 AD4550 CHA/SUB307 <b>921692</b>
CY30-PF217-SUB217 AD4240 <b>920642</b>	CY30-PF396-SUB396 AD4300 <b>920643</b>	CY30-PF396-SUB396 AD4400 <b>920644</b>	CY30-PF396-SUB396 AD4550 <b>922024</b>
PF 217 <b>430034</b>	PF 396 <b>430035</b>	PF 396 <b>430035</b>	PF 396 <b>430035</b>
SUB 217 <b>430043</b>	SUB 396 <b>430044</b>	SUB 396 <b>430044</b>	SUB 396 <b>430044</b>
CHA 145 <b>430061</b>	CHA 235 <b>430062</b>	CHA 307 <b>430064</b>	CHA 307 <b>430064</b>
		2 x MC 145 <b>430070</b>	
		2 x PAR 217 <b>430052</b>	
T40 <b>708988 x 8</b>	T50 <b>717578 x 8</b>	T50 <b>717578 x 10</b>	T50 <b>708988 x 16</b>

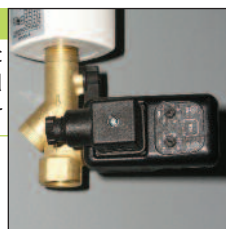
2

HYGROMIL'S probe



3

COMBI automatic drain fitted on the filter



1

HYGROMIL'S 2000 built-in dew point analyser



4

BEKO 12 electronic drain fitted on the filter

