

# PIXX 1717

## Flat-panel X-ray Detector

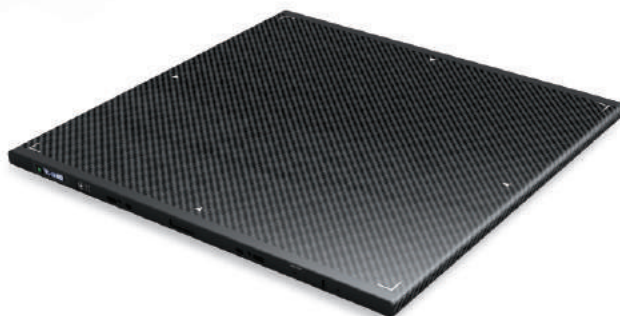


- High Image Quality
- Long Battery Life
- On Board Storage
- Mobile Viewing
- OLED Window
- Whole Carbon Body
- AED<sup>Plus</sup> Technology
- HDMI Data Cable

PIXX 1717 is a flat-panel digital x-ray detector with largest image coverage of 17" by 17" for every application with features not found on any other image device. PIXX 1717 is equipped with not only CsI but also premium Gadax scintillator for cost effective product line and it allows high X-ray sensitivity and high image quality. Thanks to 2<sup>nd</sup> generation AED technology which makes continuous and stable image acquisition without any loss of x-ray signal. On-board storage and Mobile Viewer allow users to use DR detector as like CR imaging plate. The detector provides other features that you love.

# PIXX 1717

## Flat-panel X-ray Detector



### Product Options

Wired  
Wireless

Standard (HDMI type) Data Link Cable  
High Speed Wi-Fi, approx. 6 hours of battery life

### Features

High Image Quality  
Faster Image Acquisition  
AED<sup>Plus</sup>  
Stand-alone Use  
On-board Storage  
Web Viewer for Mobile Phone  
One-piece Carbon Body  
OLED Display for Status

High SNR and Low Noise at lower dose  
With largest image coverage 17" x 17", less than 3~5 second  
Second generation of continuous & accurate AED provides faster and efficient image acquisition  
Without workstation, detector works with x-ray source in portable & mobile environment  
Protect any data loss by saving up to 100 images on the detector  
Instant Viewer from any personal mobile devices  
Full carbon fiber housing allows light and durable detector  
OLED window helps user to check the status of detector

### Specifications

Application	General Radiography
Sensor	a-Si TFT array Flat Panel Detector
Conversion Screen	CsI / GOS
Image Size	17 x 17 inch (427.25 mm x 427.25 mm)
Sensor Pixel	3,072 x 3,072 (9.4 M pixels)
Pixel Size	140 $\mu$ m
Spatial Resolution	3.6lp/mm
Image Data	14bit / 16bit
Trigger Mode	AED (Automatic Exposure Detection), Manual Trigger
Calibration Mode	ACC (Auto Calibration Control), Manual Calibration
Data Transfer Time	Less than 1 sec.
Capture Cycle Time	3 ~ 5 sec. approx.
Wired Interface	Gigabit Ethernet
Voltage	AC 100 ~ 240V, 50/60Hz   DC 18V 3.5A
Wireless Standard	IEEE 802.11ac
Battery Type	Lithium Ion Polymer Battery
Dimensions (W x L x T)	461 mm x 460 mm x 15 mm
Weight	2.6Kg (5.7lb), 3.0Kg (6.6lb, with battery)



# PIXXGEN

PIXXGEN Corporation

5F, SMART BAY, 123, Beolmal-ro, Dongan-gu, Anyang-si, Gyeonggi-do, 14056, Korea  
Tel. +82.70.4846.8888 Fax. +82.2.6455.2905 Email. sales@pixxgen.com

Ver.2  
www.pixxgen.com  
©2018 PIXXGEN. All rights reserved.